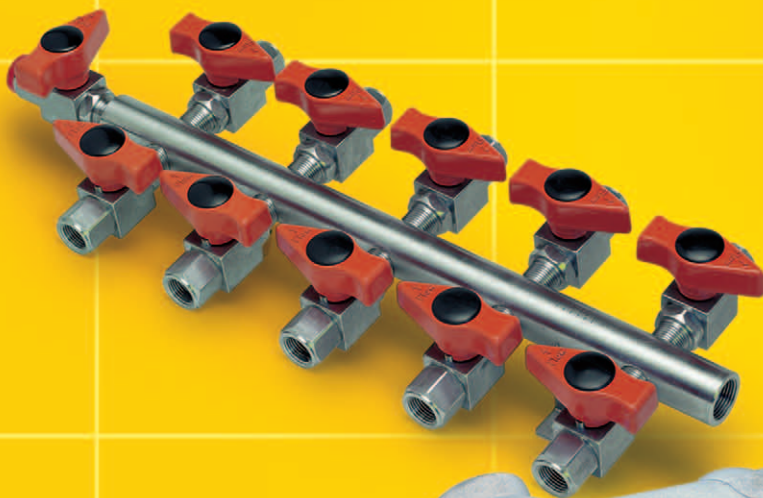


Distribution Manifolds

SAFELOK[®]

Accessories



Seal Pots & Tube

SAFELOK[®]



One of the most comprehensive component design and manufacture packages available today to the Oil and Petrochemical Industry is offered by Safelok Components.

Harnessing the demands of the industry for Total Quality Management (TQM), the Safelok indigenous quality philosophy provides a range of Valves and Instrumentation Fittings finished to the highest standards.



Also ideal for other industrial applications, where significant opportunities exist for component replacement and enhancement. Construction material specification includes Stainless Steel, Aluminium Bronze & Carbon Steel. A variety of alternative exotic material specifications are available eg. Monel, Hasteloy, Incoloy and Titanium.

Maintaining their TQM practices throughout the manufacturing process, Safelok ensure all materials utilised in the completion of major components are traceable. Copies of the original mill certificates are retained for future reference.



All products are manufactured in compliance with
ISO 9001 - 2008
Safeloks capabilities also extend to Instrumentation Procurement Packages for major Oil Companies and the Construction Industry, both in the United Kingdom and throughout the world.



SAFELOK®

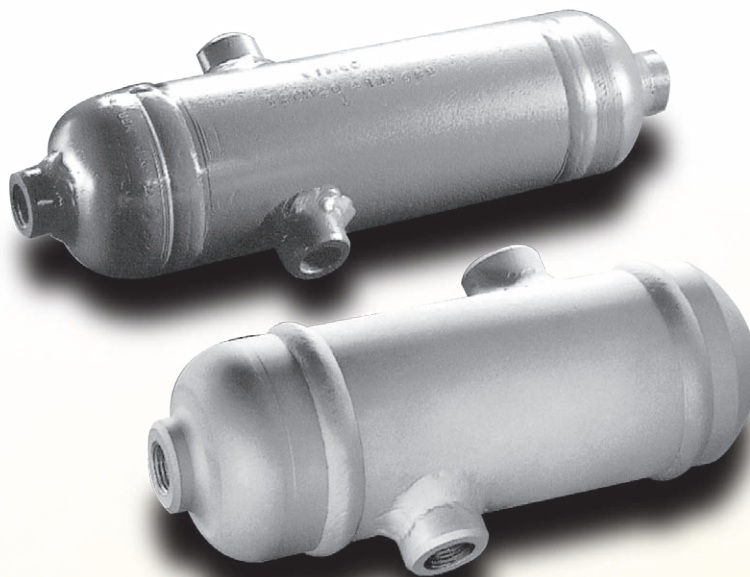
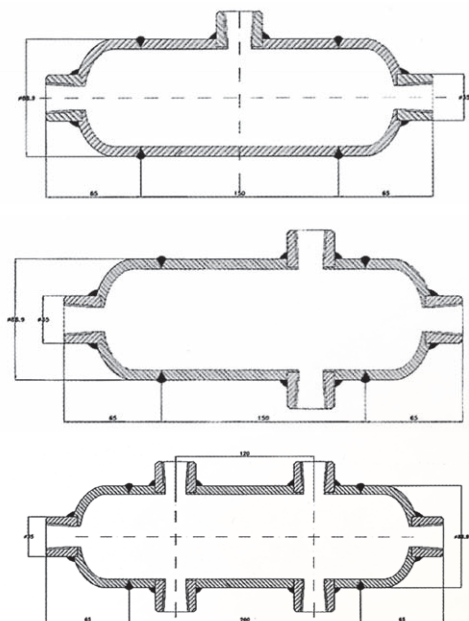
SAFELOK is a trade mark of Safelok Components Limited



BRITISH DESIGN AND MANUFACTURE



CONDENSING AND SEAL POTS



Condensing and Seal Pots

MATERIAL	SCHEDULE 40		SCHEDULE 80		SCHEDULE 160		SCHEDULE XXS	
	Pressure Test		Pressure Test		Pressure Test		Pressure Test	
	Kg./cm ²	PSI	Kg./cm ²	PSI	Kg./cm ²	PSI	Kg./cm ²	PSI
A106 Gr.B	80	1150	125	1800	210	3000		
AISI 316	95	1350	155	2200				
A335 P11			125	1800	210	3000	190	4100

Standard Material and Wall thickness

Wall thicknesses are indicated by schedule number according to American standards: ANSI B36-10

Safelok Seal Pots are generally used in the measurement of high density and corrosive fluids.

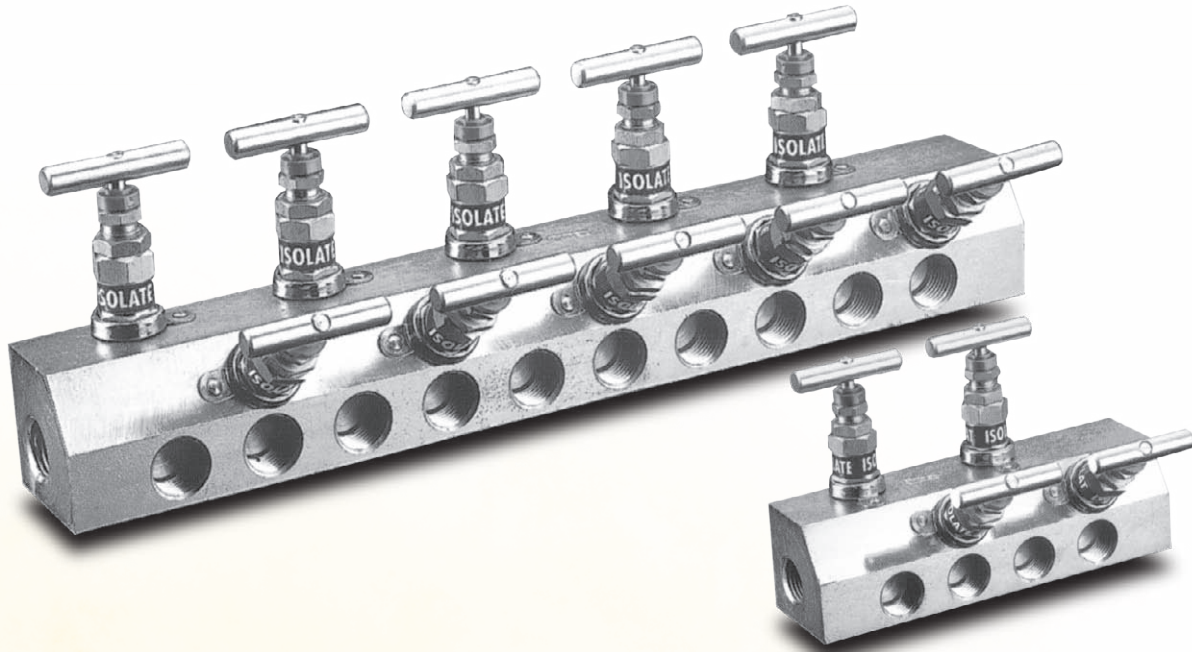
They are used as a reservoir to safeguard the measuring instruments from contamination and damage.

Safelok Condensing Chambers are generally used on steam metering lines to cool and condense steam to maintain a constant liquid head above the instruments.

Both Seal and Condensate Pots can be supplied complete with valves or threaded / weld connections.

- Wide choice of materials available 316 Stainless Steel, ASTM, A106, GRB P22, Monel.
- Wide variation of design, please specify.
- Available threaded, socket weld and butt weld.
- Additional testing: dye penetrant and radiography on request.

INTEGRAL NEEDLE VALVE MANIFOLDS



- 100% Factory tested.
- Gland packing PTFE (225°C) Graphoil (500°C).
- Non - rotating stem tip assembly assures bubble tight shut off.
- Pressure rating: Standard 6,000 PSI on request 10,000 PSI.
- Available with anti - tamper handles.
- Standard materials 316 Stainless Steel, Carbon Steel, Monel, alternative materials available on request.
- Standard manifolds 4, 6, 8 & 10-way.
- Connections 1/4 or 1/2 NPT, BSPP or BSPT.
- End connections 1/2 or 3/4 NPT, BSPP or BSPT.

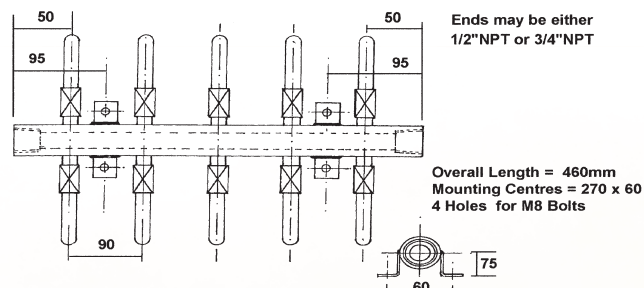
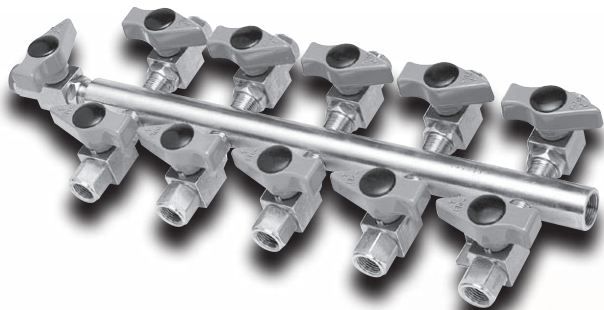
The Safelok Integral Needle Valve Manifold has many benefits including reduction of weight, fewer leak paths and added strength.

This together with the undoubted quality makes this product a must for designers and engineers wherever distribution is required.

Accessories

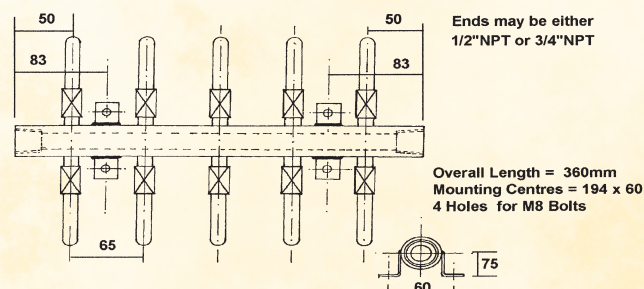
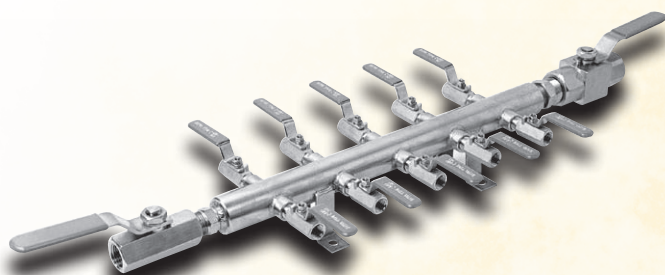
AIR DISTRIBUTION MANIFOLDS

HIGH PRESSURE - 3,000 PSI / Pn 204 & 6,000 PSI / Pn 408.



- High pressure 3,000 PSI & 6,000 PSI standard, 10,000 PSI on request.
- Choice of up to 10-way or less.
- NPT / BSPP / BSPT / Weld / Flanged connections.
- Choice of inlet / outlet valves.
- Supplied complete with mounting feet on standard manifolds.
- 100% Factory tested.
- Choice of materials 316 Stainless Steel, Carbon Steel, Monel and many more.

LOW PRESSURE - 1,000 PSI / PN 68.



- Low pressure 1,000 PSI as standard.
- Choice of 10-way or less.
- NPT / BSPP / BSPT / Weld / Flanged connections.
- Choice of inlet / outlet valves.
- Supplied complete with mounting feet on standard manifolds.
- 100% Factory tested.
- Standard materials 316 Stainless Steel, Carbon Steel, Monel, alternative materials available on request.

Accessories

STAINLESS STEEL SEAMLESS INSTRUMENTATION TUBE



To compliment Safelok's range of Twin Ferrule Compression Couplings, Needle Valves and Ball Valves, a full range of 316/316L Seamless Stainless Steel Tube conforming to ASTM A269/213 TP316/316L.

- All tube has a maximum hardness of Rb80, making it compatible with the Safelok range of twin ferrule compression couplings.
- All tube is of the highest quality and is manufactured in some of the most technically advanced mills within the E.E.C.
- All tube comes complete with material test certificates conforming with DIN 50049 3.1b / EN 10204 3.1b.

Size 1/8" OD to 1" OD 20, 18, 16 & 14 standard wire gauges.

6mm OD to 25mm OD 1mm, 1.5mm, 2mm & 2.5mm.

All tubing is supplied under Safelok's ISO 9002 / EN 29002 / BS5750 pt2 accreditation.

Our other product ranges include



SAFELOK

SAFELOK®

MANUFACTURED BY:

SAFELOK COMPONENTS LTD.
UNIT 1,
THE KILSHAW CENTRE,
KILSHAW STREET,
LAMBERHEAD INDUSTRIAL ESTATE,
WIGAN WN5 8EA
ENGLAND

TEL: +44 (0)1942 227257
FAX: +44 (0)1942 218012

Website: www.safelok.com
e-mail: enq@safelok.com



SAFELOK